

Diaphragm Switch



Diaphragm Switch B314
Technical Information:

Applicability: Universal, also for liquids at maximum pressure of 1 bar

Housing: Pressure casting AlSi

Installation: Mounting to the silo wall or loose mounting inside the silo (Part Number 800303/ IP65 required) Diaphragm mounting ring (accessories) mounted for sealing the housing, and pressure equalization and cable insertion is performed by an on-site supplied PG16

Diaphragm: EPDM, food safe, 120mm Ø

Responsivity: Adjustable approx. 50 – 250g central, respectively approx. 15 – 80mm WS pressure onto the diaphragm

Flooding consistency: max. 1kg/cm²

Environmental temperature: -15 °C to 100°C

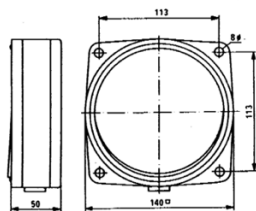
Micro switch: 1 switch interface

Switching power: 230VAC 3A, 24VAC 5A, 24VDC 2A

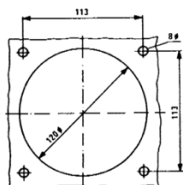
Weight: approx. 1.05 kg

Specialized types: Special diaphragm B314 IP65, B314F fruit acid resistant

Sketch:



Bohrungen in der Silowand für Anbau



Diaphragm Switch AD311
Technical Information:

Applicability: For large silos and rough activity

Housing: Aluminum pressure casting

Installation: Use as full, empty and required-amount detector, for dust and powder-forming bulk material, just like for granulated bulk material with a granulation of 100mm and an apparent specific gravity from 0.3 to 2.5t/m³.

Methods of mounting: Factory made as attachment

Diaphragm: Standard Viton; optional: Stainless steel

Responsivity: adjustable approx. 100 – 300g, especially 200 – 300g (stainless steel).

Environmental temperature:

-20 °C to 150°C,

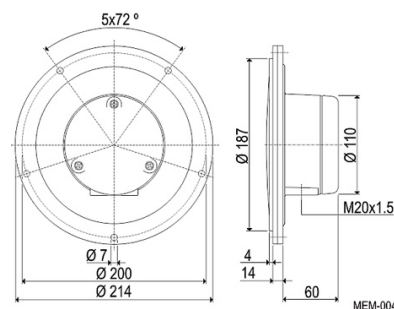
-30 °C to 200°C (stainless steel).

Switching power: Maximum 8A at 250V

Cable gland: PG11

Protection: IP53 upon installation air balancing filter to the bottom, otherwise, IP40.

Sketch:



Diaphragm Switch AD320 ATEX
Technical Information:

Applicability: ATEX Protection Zone 20/21

Housing: Aluminum pressure casting

Installation: Use as full, empty and required-amount detector, for dust and powder-forming bulk material, just as granulated bulk material with a granulation of 100mm and an apparent specific gravity from 0.3 to 2.5t/m³

Responsivity: adjustable approx. 200 – 500g, (stainless steel).

Environmental temperature: -20 °C to 60°C

Switching power: Maximum 4A at 250V, 2A with inductive and capacitive loads

Protection: IP65 upon installation

Weight: 1.0kg

Sketch:

